

# CP-UNP-D2521L10-DP

2 MP Full HD Network IR PTZ Camera– 100 Mtr.

- 1/2.8" 2MP CMOS Image sensor (0.9071 centimeters)
- Max. 25/30fps@1080P
- Powerful 25x Optical and 16x Digital zoom
- WDR(120dB), 3D-DNR, Day/Night (ICR), ROI, Defog, AWB, BLC, HLC
- Support Starlight Function
- Up to 300 presets, auto scan, 8 tour, 5 pattern, auto pan
- IR Range of 100 Mtr.
- Max 240° /s pan speed, 360° endless pan rotation
- Built-in 2/1 alarm in/out, IP66, Support PoE+
- Mobile Software: iCMOB, gCMOB
- CMS Software: KVMS Pro



## System Overview

This Series has been developed mainly to present the PTZ cameras that have been designed to submerge into the surface and keep a secret eye on the scene. The Lite Series obeys the notion of stealth surveillance, while at the same time, expanding the image quality through using the wide dynamic range technology, which provides a balanced lighting and clears distortions.

## Functions

### Starlight Technology

This camera is widely used to provide sharper and clearer picture quality with the help of its exceptional starlight sensitivity as the camera improves night vision in low light conditions. This technology is useful in conditions with extremely low light as the starlight technology turns almost completely dark images into those of clear colors.



## CP-UNP-D2521L10-DP

2 MP Full HD Network IR PTZ Camera– 100 Mtr.

### Functions

#### Wide Dynamic Range (WDR)

When a scene is partly dark and partly bright, that is the dynamic range that distorts images due to this difference in the lighting. WDR technology provides you balanced lighting for a clear and vivid image throughout the day. WDR technology can be installed at entry/exit points of any building structure, jewellery shops, outdoor location among so many other places.

#### True Day/Night (ICR)

When the scene is too dark, the image is captured by illuminating an infrared light through the camera onto the scene that greatly helps with making the scene visible for the lens. It delivers color images during the day and automatically switches to the monochrome feature as the scene darkens.

#### Regions of Interest

Regions of Interest (ROI) is a user defined feature that allows the operator to monitor specific areas of a scene while still maintaining overall situational awareness of less important areas.

#### gCMOB/ iCMOB

Designed to allow users to access and control live streaming from CP PLUS IP Cameras, DVRs/ NVRs and Video Door Phones, the CP PLUS gCMOB/ iCMOB application offers a host of features such as Easy GUI, up to 16 live viewing split-ups; InstaOn cloud support; Playback; digital zoom ins; two-way talk, and more.

#### KVMS Pro

The KVMS Pro is a hybrid security management software that allows the management of various surveillance devices such as cameras, DVRs/ NVRs, encoders/ decoders, etc. It is released with the surveillance hardware and exclusively supports CP PLUS devices.

### About CP PLUS

The brand that is on its way to lead the world when it comes to the security and surveillance industry, CP PLUS, keeps bombarding the market with the most reliable range of products that have been designed carefully and methodically to automate the whole surveillance and security process, no matter how big your premises are.

It was the initiative to help the public in the area where they are the most vulnerable and to empower the sense of safety in our hearts that had conceptualized CP PLUS. And embarking on its mission to make the world a safer and more secure place has taken the brand's journey to unprecedented levels even when compared to international competitors.



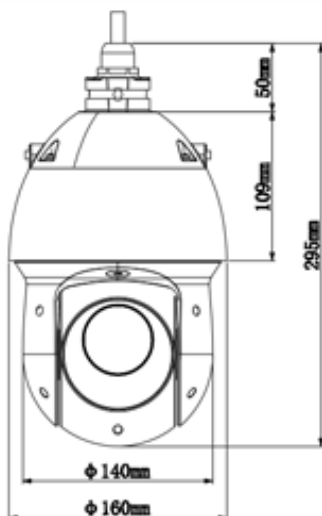
## CP-UNP-D2521L10-DP

2 MP Full HD Network IR PTZ Camera– 100 Mtr.

| Feature                  | Specification   |
|--------------------------|---|
| Image Sensor             | 1/2.8" 2MP PS CMOS (0.9071 centimeters)   |
| Effective Pixels         | 1920(H) x 1080(V), 2 Megapixels   |
| S/N Ratio                | More than 50dB  |
| Minimum Illumination     | Color: 0.005Lux@F1.6; B/W: 0.0005Lux@F1.6; 0Lux@F1.6 (IR on)                          |
| RAM/ROM                  | 1024MB/ 128MB   |
| Electronic Shutter Speed | 1/1s~1/30,000s  |
| Focal Length             | 4.8mm~120mm   |
| Max. Aperture            | F1.6 ~ F4.4   |
| Iris Control             | Auto/Manual   |
| Focus Control            | Auto / Manual   |
| White Balance            | Auto, ATW, Indoor, Outdoor, Manual  |
| Close Focus Distance     | 100mm~ 1000mm   |
| Resolution               | 1080P(1920×1080)/720P(1280×720)/D1(704×576/704×480)/CIF(352×288/352×240)              |
| DORI Distance            | 1613m(Detect) 646m (Observe) 323m (Recognize) 161m (Identify)                         |
| Angle of View            | H: 62.8° ~ 2.6°   |
| AGC control              | Auto / Manual   |
| Back Light Compensation  | BLC / HLC / WDR(120dB)  |
| Optical Zoom             | 25x   |
| Digital Zoom             | 16x   |
| Pan Travel               | 0°~360° endless, Pan Speed: 0.1° ~ 200°/sec   |
| Tilt Travel              | -15° ~ 90° auto flip 180°, Tilt Speed: 0.1° ~120°/sec                                 |
| Manual Speed             | Pan: 0.1° ~200° /s; Tilt: 0.1° ~120° /s   |
| Presets                  | 300   |
| Preset Speed             | Pan: 240° /s; Tilt: 200° /s   |
| Privacy Masking          | Up to 24 areas  |
| Special Features         | IR Range upto 100m, Defog, Up to 300 Presets, 5 Pattern, 8 Tour, Auto Pan , Auto Scan |

| Feature                  | Specification  |
|--------------------------|--|
| Power up Action          | Auto restore to previous PTZ and lens status after power failure   |
| Speed Setup              | Human-oriented focal Length/ speed adaptation  |
| Idle Motion              | Activate Preset/ Scan/ Tour/ Pattern if there is no command in the specified period  |
| Day/Night: IR Cut Filter | Auto (ICR) / Color / B/W   |
| Video Compression        | H.265+/H.265/H.264+/H.264  |
| Video Streaming          | Main stream: 1080P/720P(1 ~ 25/30fps) Sub stream1: D1/CIF(1 ~ 25/30fps)<br>Sub stream2: 720P/D1/CIF(1 ~ 25/30fps)  |
| Audio Compression        | G.711a/G.711Mu/G.726/AAC   |
| ROI                      | Support  |
| Motion Detection         | Support  |
| Noise Reduction          | Ultra DNR (2D/3D)  |
| Audio Streaming          | 1/1 channel In/Out   |
| Networking               | RJ-45 (10/100Base-T)   |
| IVS                      | Tripwire, Intrusion, Abandoned/Missing, Face Detection   |
| Protocols                | IPv4/IPv6, HTTP, HTTPS, SSL, TCP/IP, UDP, UPnP, ICMP, IGMP, SNMP, RTSP, RTP, SMTP, NTP, DHCP, DNS,PPPOE,DDNS,FTP, IP Filter,QoS,Bonjour,802.1x, ONVIF Profile S&G, API |
| Alarm                    | 2/1 channel In/Out   |
| Event Trigger            | Motion detection, Video tampering, Network disconnection, IP address conflict, Illegal access, Storage anomaly   |
| Max Remote Users         | 20 users   |
| Operating Temperature    | -40°C ~ 70°C / Less than 95% RH  |
| Smart Phone              | iPhone, iPad, Android Phone  |
| Memory Slot              | NAS (Network Attached Storage), Local PC for instant recording, Micro SD card 256GB  |
| Weather Proof Standard   | IP66   |
| Dimension                | Φ160(mm) x 295(mm)   |
| Casing                   | Metal  |
| Weight                   | 3kg  |
| Power Source             | DC 12V/3A, PoE+ (802.3at)  |
| Power Consumption        | 13W, 22W (IR on, Heater on)  |

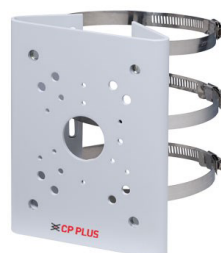
Dimensions (mm/inch)



Accessories : Optional



CP-UA-B05W  
Wall Mount



CP-UA-B3P  
Pole Mount