

SyRotech Fiber Media Converter

10/100/1000 Base-TX to 1000 Base-FX SFP



GOMC-1312-SFP

1 GIGA SFP MC

Description:

**SyRotech, Media Converter,
SFP Type, 10/100/1000M,
without SFP,
External AC220V**

> Overview:

GOMC-1312-SFP 10/100/1000M SFP slot media converter are effective solution, while uplink interface upgrade or network re-design. It can implement data transmission between twisted pair electrical signals and optical signals (SFP module).

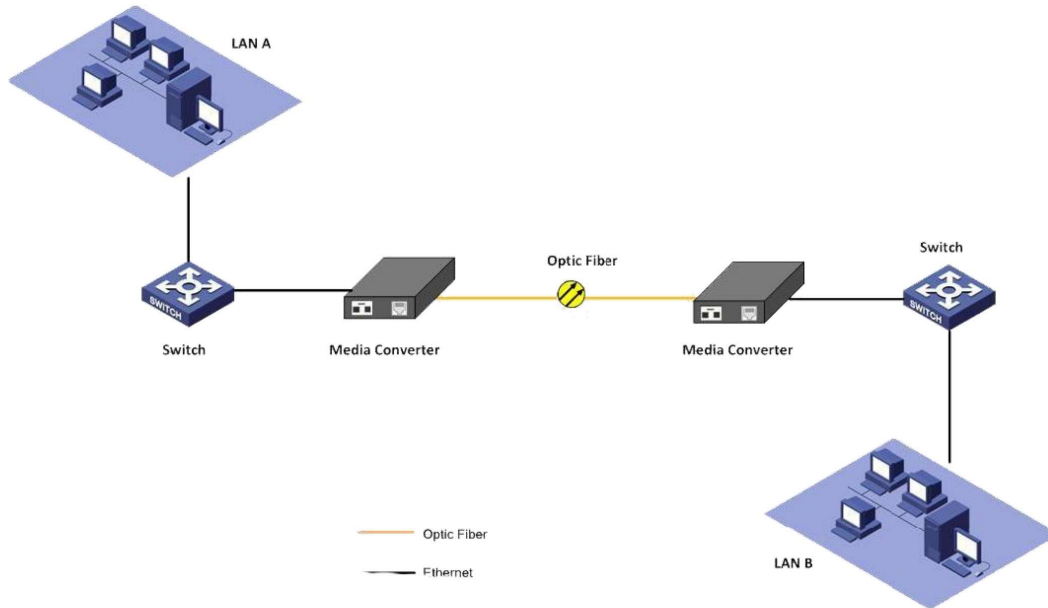
> Features:

- Compliant with IEEE 802.3 10Base-T, IEEE 802.3u 100Base-TX, IEEE 802.3ab 1000Base-TX, IEEE 802.3z 1000Base-FX Standards.
- Provide one 10/100/1000Base-T port with RJ-45 connector, one SFP Slot socket.
- Full-duplex and half-duplex auto-sensed
- Supports Auto MDI / MDI-X function
- Supporting the transmission of extra-long VLAN packets
- Supporting STP to form a redundant network
- Front panel Diagnostic LED Indications

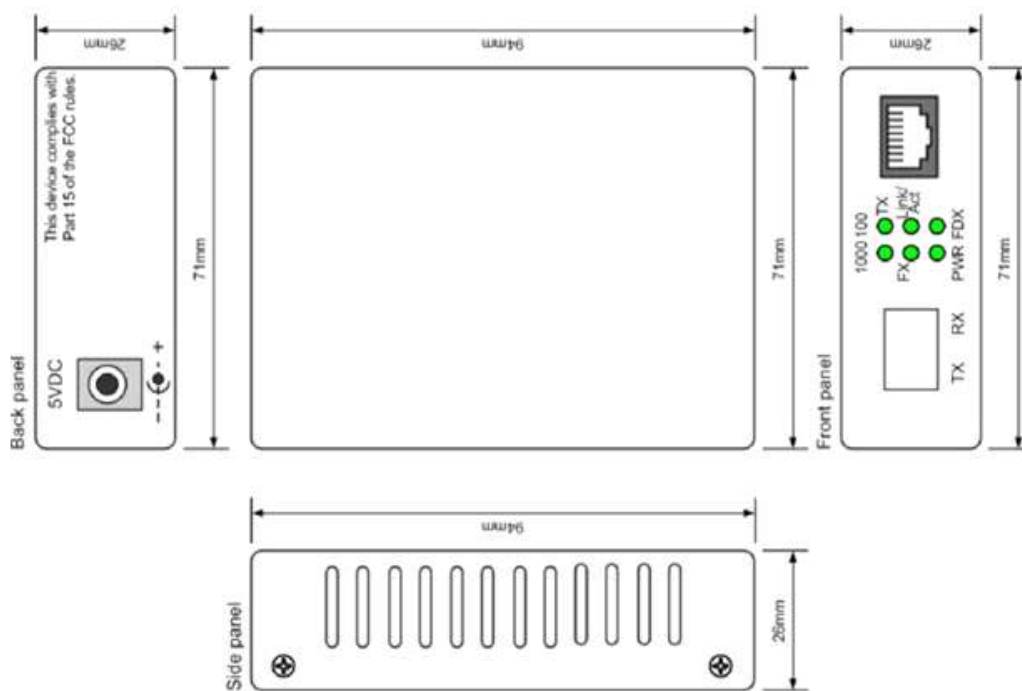
> Specifications:

Item	Description
Access mode	10/100/1000Mbps Gigabit Ethernet
Standard	IEEE 802.3 10Base-T, IEEE 802.3u 100Base-TX, IEEE 802.3ab 1000Base-TX, IEEE 802.3z 1000Base-FX, IEEE802.3x Flow control
Wavelength	1310nm/1550nm
Transmission distance	Up to SFP module
Port	One RJ45 connector, connected One SFP Socket
Conversion means	Media conversion
Delay	<10us
BER	<3W
MTBF	100,000 hours
LED	PWR (power supply);FX LINK/ACT (optical link/action) FDX (FX full duplex); TP LINK/ACT (Twisted pairs link/action) TP 1000 (1000M transmission rate of twisted pairs), TP 100 (100M transmission rate of twisted pairs)
Power consumption	5W
Operating temperature	-10~55°C
Operating humidity	5%~90%
Maintaining temperature	-40~70°C
Maintaining humidity	5% ~ 90% non-condensing
Dimensions	94mm *71mm * 26 mm (external power supply)

>> Diagram:



>> Mechanical Dimensions:



>> Applications:

- 10/100/1000M Ethernet long-distance transmitting network

