

## SyRotech Fiber Media Converter

GOMC-BI3512-20

10/100/1000 Base-TX to 1000 Base-FX



## GOMC-BI3512-20

10/100/1000M BIDI MC

### Description:

SyRotech, Media Converter,  
10/100/1000M Bidi TX1310/RX1550,  
SC, 20Km

## > Overview:

GOMC-BI3512-20 10/100/1000M Fiber Media Converter translates the signal from a twist-pair 10/100/1000Base-TX cable to 1000Base-FX fiber optic cable, extends data transmission distance from 100m via copper cables to 20km by single fiber optic cable

## > Features:

- 10/100/1000Mbps auto-sensed, easily upgrade
- Full-duplex and half-duplex auto-sensed
- MDI/MDI-X Auto Negotiation
- 10/100/1000Mbps store-and-forward
- 1000Mbps cut-through transmission
- Packet size up to 1518 bytes
- Support 9K Jumbo Frame
- Supporting VLAN / VoIP / QoS packets
- Support flow control and reduce broadcast packets
- Supporting STP to form a redundant network
- Extremely low power consumption, low heat, stable performance
- Providing Desktop, Wall-mounted, Chassis, DIN-rail installation

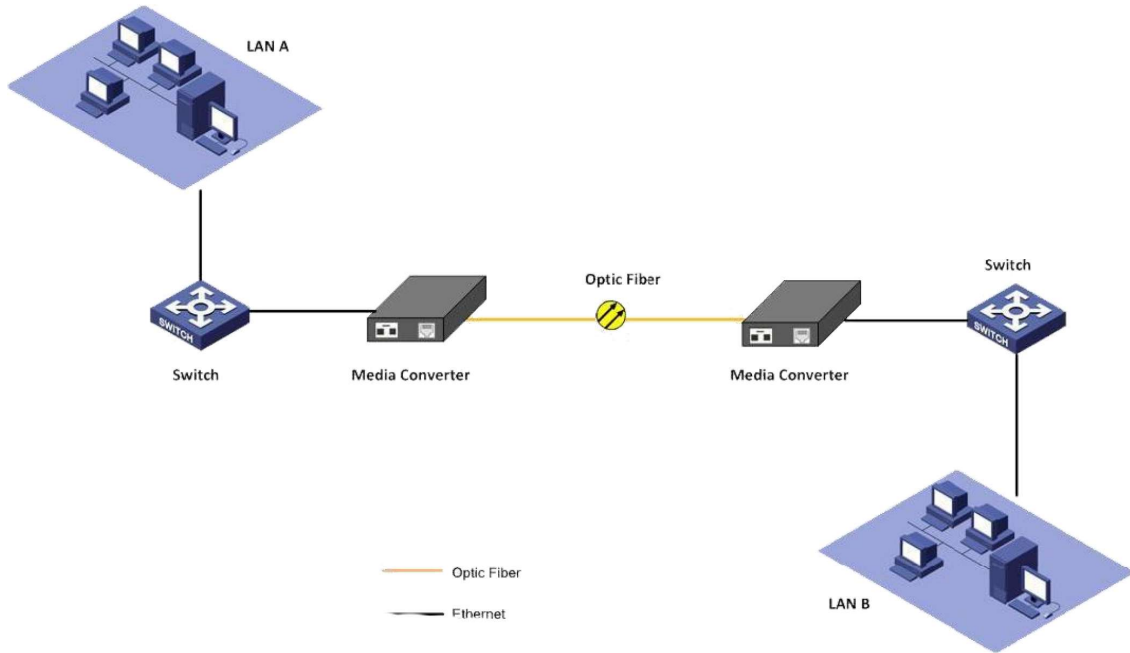
> Specifications:

| Item              | Description  |
|-------------------|--|
| Standard          | IEEE 802.3, IEEE 802.3u, IEEE 802.3ab, IEEE 802.3z   |
| Data Rate         | Copper: 10/100/1000M;<br>Fiber: 1.25G  |
| Flow Control      | Full duplex: flow control;<br>Half duplex: back pressure   |
| Cooper Port       | No.s of Copper Port: 1<br>Connector: RJ45 Connector<br>Distance:100m   |
| Fiber Port        | No.s of Fiber Port: 1<br>Connector: SC as default<br>Wavelength: 1310/1550nm<br>Distance: 20 Km  |
| LED Indicators    | PWR (power supply);<br>FL/A (optical link/action)<br>FDX (FX full duplex),<br>TL/A (twisted pairs link/action)<br>100 (100M transmission rate of twisted pairs),<br>FX (100M transmission rate of optical fiber) |
| Power Supply      | Working power: DC5V 1A<br>AC Power Supply: 100V~ AC240V to 5V1A<br>Or DC Power Supply: -36~-72V to 5V1A<br>External / Internal Power Supply Optional   |
| Power Consumption | <3W  |
| Environment       | Operating temperature: -10~55oC<br>Storage Temperature: -40~85oC<br>Relative Humidity: 5% to 95% non-condensing  |
| Dimensions        | External: 94mmx70mm*26mm<br>Internal: 140mmx110mmx30mm   |
| Gross Weight      | External: 0.4kg<br>Internal: 0.5kg   |

> Applications:

- Network Communication
- FTTH / FTTB / FTTx
- ISP Backhaul Networking
- Subscriber end equipment

### > Diagram:



### > Mechanical Dimensions:

