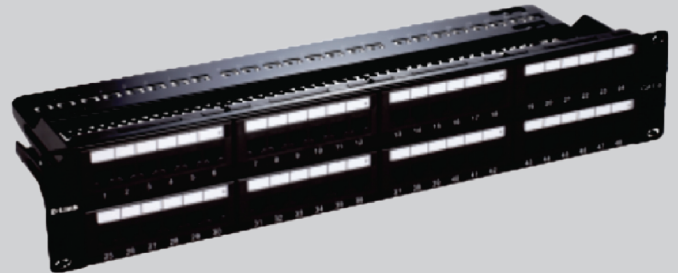


Cat6A UTP Loaded Patch Panel

D-Link Category 6A UTP patch panels are eight ports RJ-45 modules applied and suitable for 22-24 AWG stranded and solid wire, compatible with both 110 & Krone punch down tools. D-Link UTP patch panels terminate 4 pairs UTP cable and are rack mounted. They are complied with the ANSI/TIA/EIA 568C.2 10G & ISO/IEC 11801 standard.



SPECIFICATIONS

- Identification: **ID plate: PVC, transparent color with paper**
ID Bracket: ABS, UL 94V-0
- Panel: **SECC, 1.2mm thickness with optional color painted**
- Rj45 Jack- **Housing: PBT + glass fiber, UL-94V-0**
Contact Brackets: PBT + glass fiber, UL-94V-0
- RJ45 Jack Contact- **Material: Phosphor bronze with nickel plated**
Finish: 50 micro-inches Gold plated on plug contact area
- RJ45 Jack Shield: **Bronze with nickel plated**
- Dust cover: **PC, UL94V-2**
- IDC **Housing: PC+ glass fiber, UL 94V-2**
Terminal: phosphor bronze with tin plated

ORDERING INFORMATION

Part Code	Description
NPP-6A1BLK241	Cat6A UTP 24Port Loaded Patch Panel
NPP-6A1BLK481	Cat6A UTP 48Port Loaded Patch Panel

D-Link (India) Limited
Kalpataru Square, 2nd Floor, Kondivita Lane, Andheri-East, Mumbai-400059
Specifications are subject to change without notice.
D-Link is a registered trademark of D-Link Corporation and its overseas subsidiaries.
All other trademarks belong to their respective owners.
©2010 D-Link Corporation. All rights reserved. Release 01 (May 2010)