

SyRotech Fiber Media Converter

10/100Base-TX to 100Base-FX



GOMC-1303-20

Singlemode Dual Fiber

Description:

SyRotech, Media Converter,
SM Dual Fiber, 10/100M,
1310nm, SC, 20km,
External AC220V

> Overview:

GOMC-1303-20 10/100M Fiber Media Converter translates the signal from a twist pair 10/100Base-TX cable to 100Base-FX fiber optic cable, extends data transmission distance from 100m via copper cables to 20km on dual fiber optic.

> Features:

- 10/100Mbps auto-sensed, easily upgrade
- Full-duplex and half-duplex auto-sensed.
- MDI/MDI-X Auto Negotiation.
- 10/100 Mbps store-and-forward
- 100 Mbps cut-through transmission
- Packet size up to 1518 bytes
- Supporting VLAN / VoIP / QoS packets
- Support flow control and reduce broadcast packets
- Supporting STP to form a redundant network
- Extremely low power consumption, low heat, stable performance
- Providing Desktop, Wall-mounted, Chassis, DIN-rail installation

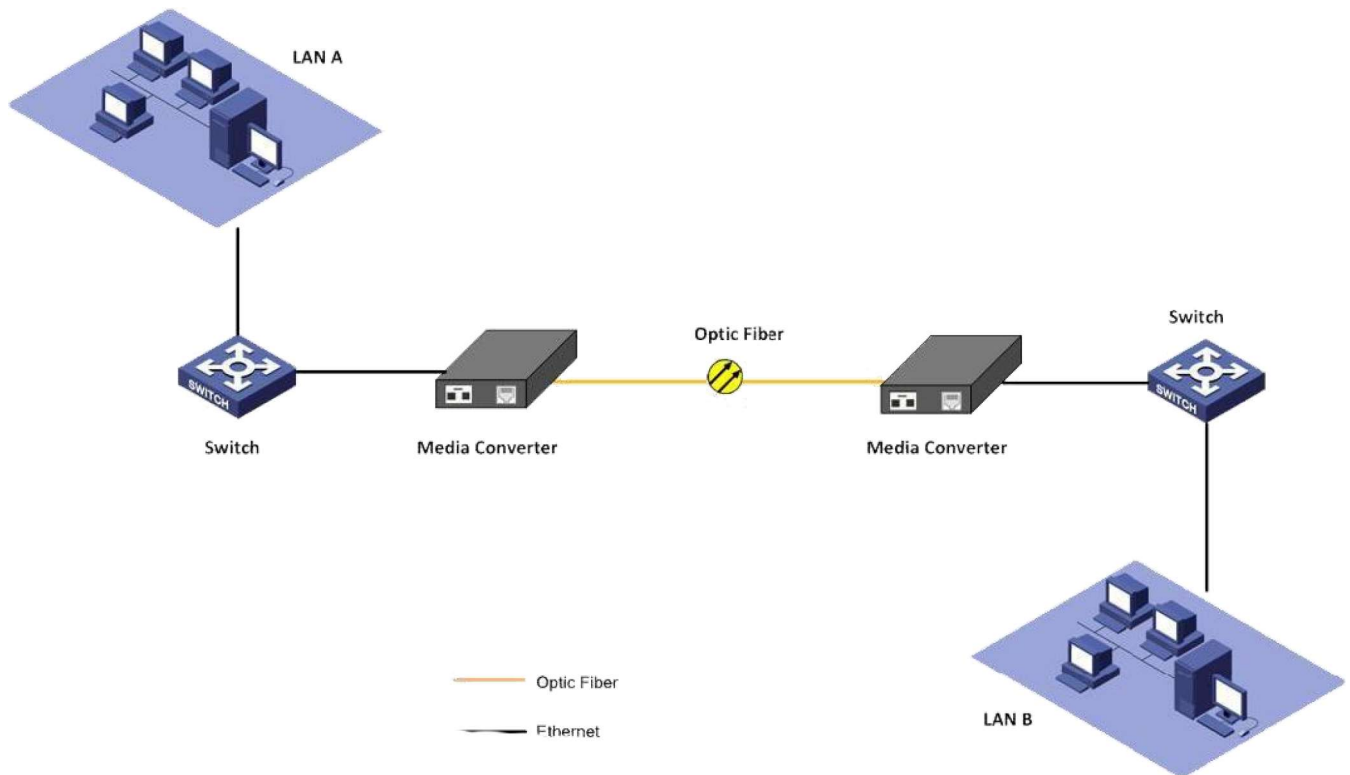
> Specifications:

Standard	IEEE802.3 10Base-T Ethernet, IEEE802.3u 100Base-TX/FX Fast Ethernet
Data Rate	Copper: 10/100M; Fiber: 155M
Flow Control	Full duplex: flow control Half duplex: back pressure
Copper Port	Nos. of Copper Port: 1 Connector: RJ45 Connector Distance: 100m
Fiber Port	Nos. of Fiber Port: 1 Connector: SC as default, Wavelength: 1310nm Distance: 20Km
LED Indicators	PWR (power supply); FL/A (optical link/action) FDX (FX full duplex), TL/A (twisted pairs link/action) 100 (100M transmission rate of twisted pairs), FX (100M transmission rate of optical fiber)
Power Supply	Working power: DC5V 1A AC Power Supply: 100V~ AC240V to 5V1A Or DC Power Supply: -36~-72V to 5V1A External / Internal Power Supply Optional

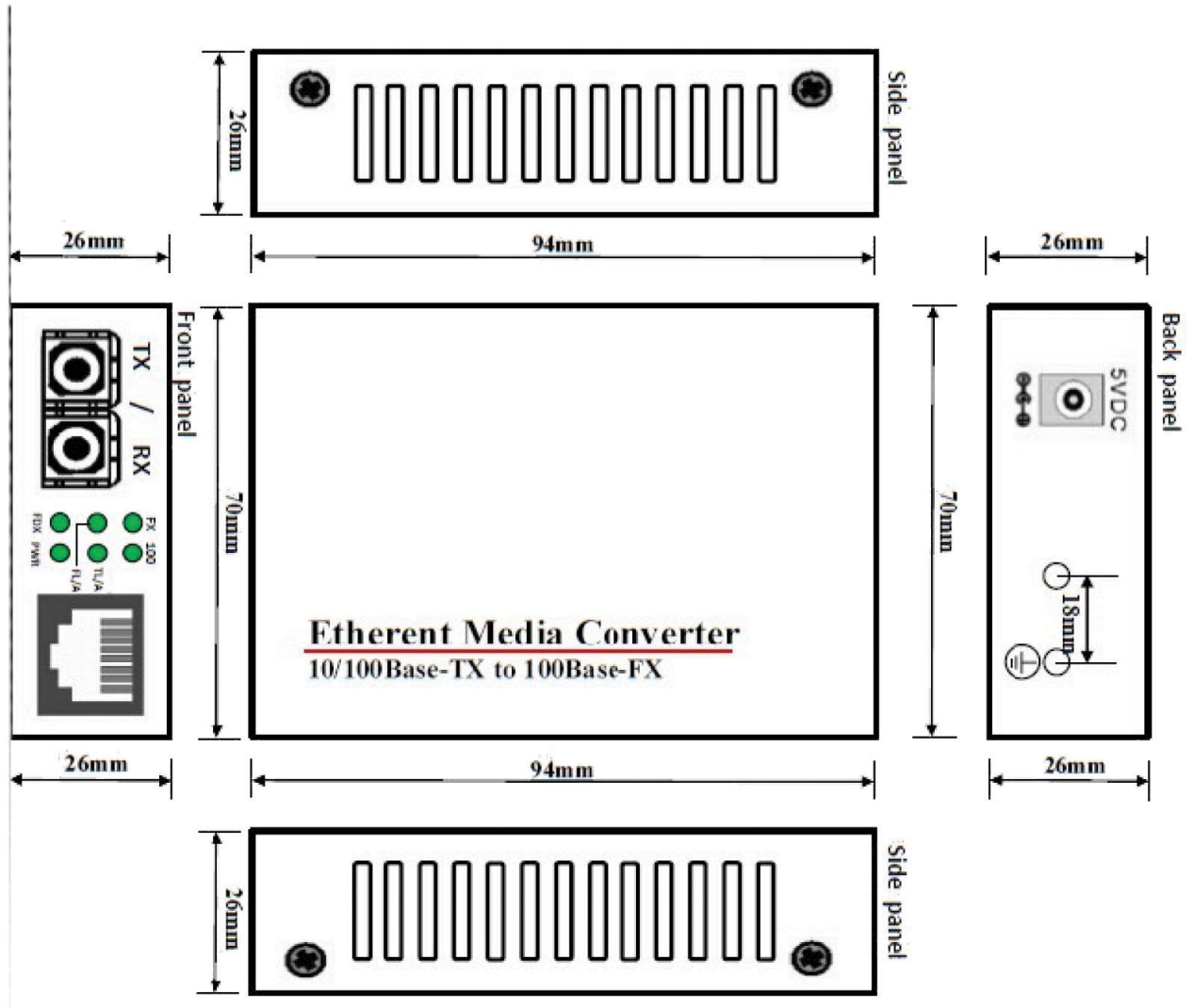
> Specifications :

Power Consumption	<3W
Environment	Operating temperature: -10~55°C Storage Temperature: -40~85°C Relative Humidity: 5% to 95% non-condensing
Dimensions	External: 94mmx70mm*26mm Internal: 140mmx110mmx30mm
Gross Weight	External: 0.4kg Internal: 0.5kg

> Diagram:



> Mechanical Dimensions:



> Applications:

- Network Communication
- FTTH / FTTB / FTTx
- ISP Backhaul Networking
- Subscriber end equipment