

Full HD IP Network Camera

Quick Setup Guide



Issue : 1.0

Precautions

Fully understand this document before using this device, and strictly observe rules in this document when using this device. If you install this device in public places, provide the tip "You have entered the area of electronic surveillance" in an eye-catching place. Failure to correctly use electrical products may cause fire and severe injuries.

	Warnings It alerts you to moderate dangers which, if not avoided, may cause minor or moderate injuries.
	Caution It alerts you to risks. Neglect of these risks may cause device damage, data loss, device performance deterioration, or unpredictable results.
	Note It provides additional information.

WARNINGS:

- Strictly observe installation requirements when installing the device. The manufacturer shall not be held responsible for device damage caused by users' non-conformance to these requirements.
- Strictly conform to local electrical safety standards and use power adapters that are marked with the LPS standard when installing and using this device. Otherwise, this device may be damaged.
- Use accessories delivered with this device. The voltage must meet input voltage requirements for this device.
- If this device is installed in places with unsteady voltage, ground this device to discharge high energy such as electrical surges to prevent the power supply from burning out.

- When this device is in use, ensure that no water or any liquid flows into the device. If water or liquid unexpectedly flows into the device, immediately power off the device and disconnect all cables (such as power cables and network cables) from this device.
- Do not focus strong light (such as lighted bulbs or sunlight) on this device. Otherwise, the service life of the image sensor may be shortened.
- If this device is installed in places where thunder and lightning frequently occur, ground the device nearby to discharge high energy such as thunder strikes to prevent device damage.

CAUTION:

- Avoid heavy loads, intensive shakes, and soaking to prevent damages during transportation and storage. The warranty does not cover any device damage that is caused during secondary packaging and transportation after the original packaging is taken apart.
- Protect this device from fall-down and intensive strikes, keep the device away from magnetic field interference, and do not install the device in places with shaking surfaces or under shocks.
- Clean the device with a soft dry cloth. For stubborn dirt, dip the cloth into slight neutral cleanser, gently wipe the dirt with the cloth, and then dry the device.
- Do not jam the ventilation opening. Follow the installation instructions provided in this document when installing the device.
- Keep the device away from heat sources such as radiators, electric heaters, or other heat equipment.
- Keep the device away from moist, dusty, extremely hot, or cold places, or places with strong electric radiation.
- If the device is installed outdoors, take insect- and moisture-proof measures to avoid circuit board corrosion that can affect monitoring.
- Remove the power plug if the device is idle for a long time.
- Before unpacking, check whether the fragile sticker is damaged. If the fragile sticker is damaged, contact customer services or sales personnel. The manufacturer shall not be held responsible for any artificial damage of the fragile sticker.

Special Announcement

- All complete products sold by the manufacturer are delivered along with name plates, quick setup guide and accessories after strict inspection. The manufacturer shall not be held responsible for counterfeit products.
- The manufacturer will update this manual according to product function enhancement or changes and regularly update the software and hardware described in this manual. Update information will be added to new versions of this manual without prior notice.
- This manual may contain misprints, technology information that is not accurate enough, or product function and operation description that is slightly inconsistent with the actual product, the final interpretation of company is as a standard.
- This manual is only for reference and does not ensure that the information is totally consistent with the actual product. For consistency, see the actual product.



For more information, please refer to website.

1 Open Package Examination

Open the package, check the appearance of product for no obvious damage, and confirm the item list for table 1-1 is consistent.

Table 1-1 Packing List

Component	Quantity	Remarks
Silica Gel	1	
Screw Set	3 Pair	
RJ 45 Cap	1	
Mounting Sticker	1	
Manual	1	

2 Device Ports



Different devices may have different multi-head cable, please refer to the actual product.

Figure 2.1 Multi head cable



Table 2.1 Multi-head Cable description

ID	Core	Description	Remarks
1	Network Access port	Connects to a standard ethernet cable.	
2	Power Supply (DC 12V)	Connects to a 12V (-15%~+10%) direct current (DC) power supply	

3 Quick Configuration (e.g IE)

3.1 Login

Step 1 Open the web browser, enter the IP address of IP camera (default value: 192.168.1.10) in the address box, and press Enter. The login page is displayed, as shown in figure 3.1.

Step 2 Input the username and password.



- The default username is admin. The default password is admin. Change the password when you log in the system for the first time to ensure system security.

- You can change the system display language on the login page.

Figure 3.1 Login Page



Step 3 Click on the Login in button, then the main page is displayed.

3.2 Modify the IP Address

Choose Configuration > Network, the **Local Network** page is displayed.

Enter the IP address in the IP address box and click **Apply** as shown in figure 3.2. After the success of the IP address settings, please use the new IP address to log in the web interface.

Figure 3.2 Local Network

Network card parameter configuration

NetCard Type: Wired network card Automatic acquisition

Device IPv4 address: 192.168.1.11

IPv4 subnet mask: 255.255.255.0

IPv4 default gateway: 192.168.1.1

MAC: b0:c5:54:69:78:57

MTU: 1400

HTTP port: 80

TCP port: 34567

Ornvif port: 8088

All Subnet Ornvif:

DNS server configuration

Preferred DNS server: 8.8.8.8

Alternate DNS server: 8.8.4.4

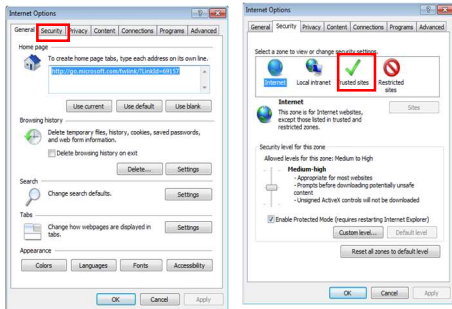
Save

3.3 Browsing Video

To ensure the real-time video can be played properly, you must perform the following operation when you log in the web for the first time:

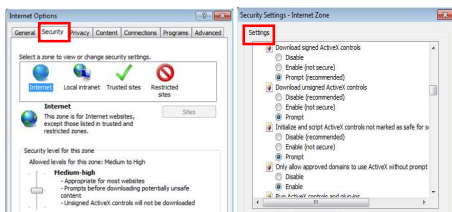
Step 1 the Internet Explorer. Choose Tools » Internet options > Security > Trusted sites » Sites, in the display dialog box, click Add, as shown in figure 3.3.

Figure 3.3 Adding a Trusted Site



Step 2 In the Internet Explorer, choose Tool > Internet Options > Security > Custom level, and set Download unsigned ActiveX control and initialize and script ActiveX controls not marked as safe for scripting under ActiveX controls and plug-ins to Enable, as shown in figure 3.4.

Figure 3.4 Configuration Active control And plug in



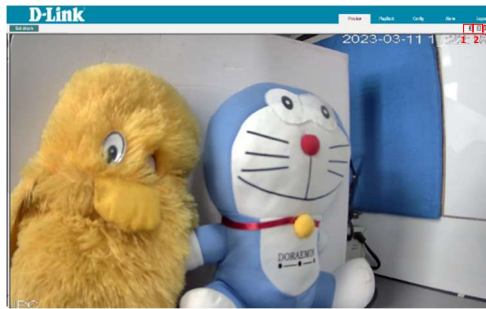
Step 3 Downloading and install the player control as prompted.

NOTE

If the repair tips displayed when installing the control, please ignore the prompt, and continue the installation, the login page is displayed when the control is loaded.

To browse a real-time video, click on preview . The Live Video page is displayed with option of , as shown in figure 3.5.

Figure 3.5 Live Video



Description :

1. Click turn on the sound, if required .
2. Click in the W:H symbol i.e., nothing but the aspect ratio of the image. Width and height of the video will be increased or decrease by clicking this.
3. To show the video area in full screen please click in this symbol .

3.6 System Information

To browse device information, Choose “**Configuration**”, go to “**System Info**” A version and system information page is displayed as shown in the figure 3.6.

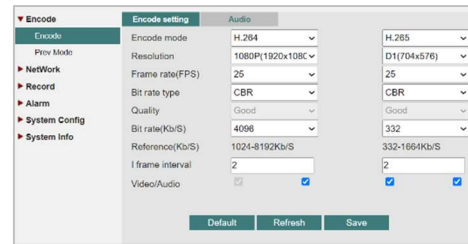
Figure 3.6 System Info



3.7 Stream Configuration

Choose “**Configuration**>**Encode** >**Encode Settings**”, the stream page is displayed , as shown in the figure 3.7 below.

Figure 3.7 Stream

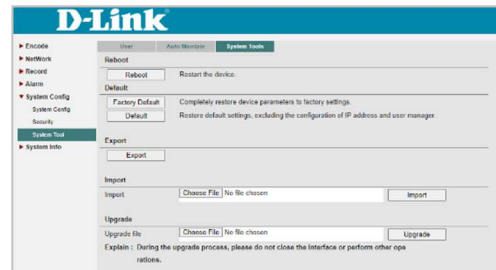


- Set the Parameter according to the page and click on “Save”.
- If the message "Save success!" is displayed, click Confirm. The system saves the settings.
- If the message “save failed!” is displayed, you must apply for the parameter configure permission from an administrator.
- If a message indicating that the “bit rate invalid “ is displayed , enter a new bit rate value.

3.8 Camera Maintenance

Choose “**Configuration**>**System Configuration**>**System Tool** ”, the “Camera Maintenance” is displayed, as shown in figure 3.8. You can restart and restore the camera in this page.

Figure 3.8 Camera Maintenance



When you click on the reboot option, device is restarted or reboot successfully.

CAUTION

After you click, all parameters (you can choose whether to reserve the IP address) will be restored to the factory settings. Use this function carefully.

1 Appendix: Hazardous Substance Declaration

Component	Hazardous Substance or Element					
	Plumbum (Pb)	Mercury (Hg)	Cadmium (Cd)	Hexavalent Chromium (Cr6+)	Polybrominated Biphenyls (PBB)	Polybrominated Diphenyl Ethers (PBDE)
Structural Part	O	O	O	O	O	O
Board/ Circuit Module	O	O	O	O	O	O
Cable connector	O	O	O	O	O	O
Accessories	O	O	O	O	O	O

NOTE

O: Indicates that the concentration of the hazardous substance in all the homogeneous substances of the component is within the limit specified in SJ/T 1163-2006 requirements for the concentration Limits for certain Hazardous Substance in Electronic Information Products

x: indicates that the concentration of the hazardous substance in at least one homogeneous substances of the component exceeds the limit specified in SJ/T 1163-2006 requirements for the concentration Limits for certain Hazardous Substance in Electronic Information Products