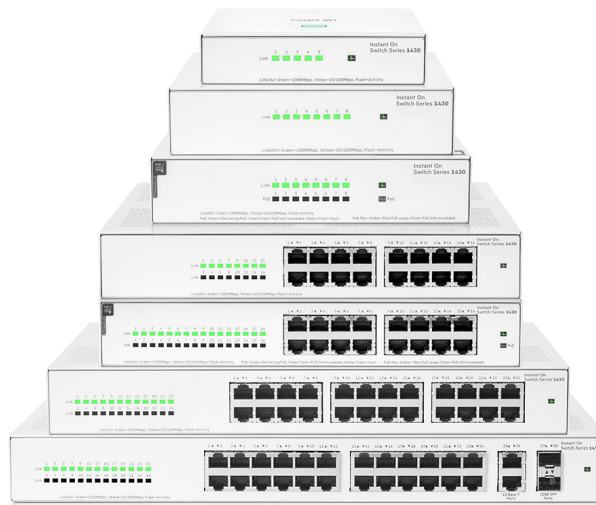


# HPE Networking Instant On Switch Series 1430

Unmanaged switches designed for small business



## Great for configuration and worry-free, simple networks

### Product overview

Technology brings new revenue opportunities, more effective communication, and improved productivity to businesses of all sizes. Yet it also poses daily configuration and maintenance challenges, especially for small businesses who lack IT support. Smart spaces and connected offices need reliable network connectivity that's fast, configuration-free, and affordable for even the most budget-strapped businesses.

The HPE Networking Instant On Switch Series 1430 is a plug-and-play unmanaged switch series for SMBs looking for simple, reliable, and low-cost network connectivity. These easy-to-use switches deliver Layer 2 Gigabit Ethernet switching capabilities — at an affordable price point — to help connect and share common resources like printers and access points, without any complicated network configuration.

With plug-and-play operation, fully automated functions, zero ongoing maintenance, and Power-over-Ethernet (PoE) models, these switches deliver simple, reliable connectivity for the smallest SMBs and small workspaces.

The Instant On 1430 switches have seven configurations to choose from: 5-, 8-, 16-, 24-, and 26-ports, with optional PoE in the 8- or 16-port configurations. With the PoE models, you get up to 30W PoE per port power delivery for Class 4 PoE devices like access points, surveillance cameras and VoIP phones. The 8-port and 16-port PoE models come with a power budget of 64W and 124W respectively to support the latest IoT devices. The 26-port 1430 switch includes 2 SFP ports to uplink to other switches over long distances. All switches are fan-less, making them ideal for acoustically sensitive areas, and are unmanaged, requiring no configuration (not managed by Instant On management).



## Highlights

- Simplicity at its best
  - Plug-and-play switches that work right out of the box
  - Zero configuration required
- Reliable connectivity
  - Connect faster with Gigabit Ethernet speed
  - PoE to power devices like APs and IP phones
- We've got you covered
  - Industry-leading warranty and support
  - 24 x 7 chat support for entire warranty period

## Instant On differentiators

### Better together

Instant On products work together to provide a seamless Wi-Fi experience. Wired and wireless voice traffic is prioritized with high QoS priority end-to-end for optimal voice performance.

### Industry-leading support and warranty

Expert-level support and industry-leading limited lifetime warranty are also included, along with chat support for the life of the product.

## Key features

### Plug and play

#### Gigabit Ethernet speeds

Supports half/full-duplex auto-negotiating capability on access ports that doubles the throughput of every port.

#### Long-distance fiber connectivity

26-port model includes two 1G SFP fiber ports for uplinks and to support long-distance connectivity using fiber transceivers, for a total of 28 Ethernet ports.

#### Simplified cabling

Automatically adjusts for straight-through or crossover cables on all 10/100/1000 ports using Auto MDI/MDI-X.

#### Ethernet Alliance PSE Class 4 PoE Certification


Power-over-Ethernet (PoE) functionality is supported on two 1430 models that provide up to 30W per port, which allows support of Class 4 PoE or IEEE 802.3at-capable devices such as video IP phones, wireless access points, as well as any 15.4 W IEEE 802.3af-compliant end device, thereby eliminating the need for additional electrical cabling and circuits.

### EAPoL frames forwarding

802.1x EAP over LAN frames are forwarded through the switch so that clients can authenticate when the device provides connectivity between an authenticator and supplicants.

### STP BPDU frames forwarding

The switch forwards the BPDU frames to make sure that Spanning Tree Protocol works correctly preventing loops in the topology.

| Brand | Standard      | Class | Min. power at the PSE port | Max. power at the PD port | Wire usage | EA Certified Logo   |
|-------|---------------|-------|----------------------------|---------------------------|------------|---|
| PoE 1 | IEEE 802.3 af | 0-3   | 15.4W                      | 13W                       | 2 pair     |  |
|       | IEEE 802.3 at | 4     | 30W                        | 25.5W                     |            |   |

### Traffic optimization

#### Prioritize voice and video

Quality of Service provides priority of time-sensitive packets (like VoIP and video) over other traffic based on DSCP or IEEE 802.1p classification.

#### Flow control

Provides a flow-throttling mechanism propagated through the network to prevent packet loss at a congested node.

#### Jumbo frame support

Provides up to 9216 bytes frame size to improve the performance of large data transfers.

### Energy efficiency

#### Energy Efficient Ethernet (EEE)

Compliant with 802.3az standard requirements to save energy during periods of low data activity.

#### Fan-less operation

Requires less power to operate and enables quiet operation in acoustically sensitive environments.

### Warranty, service and support

Instant On Limited Lifetime Support provides 24x7 phone support for the first 90 days and chat support for the entire warranty period. Community support is included for the life of the product.

Refer to the Hewlett Packard Enterprise website at [hpe.com/networking/services](http://hpe.com/networking/services) for details on the service-level descriptions and product numbers. For details about services and response times in your area, please contact your local Hewlett Packard Enterprise sales office.



## Technical specifications

|  | <b>HPE Networking<br/>Instant On Switch 5p<br/>Gigabit 1430<br/>(R8R44A)</b>  | <b>HPE Networking<br/>Instant On Switch 8p<br/>Gigabit 1430<br/>(R8R45A)</b>  | <b>HPE Networking<br/>Instant On Switch 8p<br/>Gigabit CL4 PoE 64W<br/>1430<br/>(R8R46A)</b>  | <b>HPE Networking<br/>Instant On Switch 16p<br/>Gigabit 1430<br/>(R8R47A)</b>  |
|--|---|---|---|--|
| <b>I/O ports and slots</b>             |   |   |   |  |
|  | 5 RJ-45 autosensing 10/100/1000 ports (IEEE 802.3 Type 10BASE-T, IEEE 802.3u Type 100BASE-TX, IEEE 802.3ab Type 1000BASE-T); Duplex: 10BASE-T/100BASE-TX: half or full; 1000BASE-T: full only | 8 RJ-45 autosensing 10/100/1000 ports (IEEE 802.3 Type 10BASE-T, IEEE 802.3u Type 100BASE-TX, IEEE 802.3ab Type 1000BASE-T); Duplex: 10BASE-T/100BASE-TX: half or full; 1000BASE-T: full only | 8 RJ-45 autosensing 10/100/1000 Class 4 PoE ports (IEEE 802.3 Type 10BASE-T, IEEE 802.3u Type 100BASE-TX, IEEE 802.3ab Type 1000BASE-T); Duplex: 10BASE-T/100BASE-TX: half or full; 1000BASE-T: full only | 16 RJ-45 autosensing 10/100/1000 ports (IEEE 802.3 Type 10BASE-T, IEEE 802.3u Type 100BASE-TX, IEEE 802.3ab Type 1000BASE-T); Duplex: 10BASE-T/100BASE-TX: half or full; 1000BASE-T: full only |
| <b>Physical characteristics</b>        |   |   |   |  |
| Dimensions (D x W x H)                 | 3.66 x 4.56 x 1.02 in (9.3 x 11.6 x 2.6 cm)   | 5.43 x 6.18 x 1.45 in (13.8 x 15.7 x 3.7 cm)  | 5.91 x 6.96 x 1.45 in (15 x 17.7 x 3.7 cm)  | 10.16 x 10.83 x 1.72 in (25.8 x 27.5 x 4.4 cm)   |
| Weight                                 | 0.60 lb (0.27 kg)   | 1.30 lb (0.59 kg)   | 1.70 lb (0.77 kg)   | 3.80 lb (0.172 kg)   |
| <b>Processor and memory</b>            |   |   |   |  |
|  | 2Kb EEPROM; Packet buffer size: 1.0 Mb  | 128Kb EEPROM; Packet buffer size: 2.0 Mb  | 128Kb EEPROM; Packet buffer size: 2.0 Mb  | 128Kb EEPROM; Packet buffer size: 2.0 Mb   |
| <b>Performance</b>                     |   |   |   |  |
| 100 Mb latency                         | < 3.81 µSec   | < 2.7 µSec  | < 2.7 µSec  | < 2.7 µSec   |
| 1000 Mb latency                        | < 0.93 µSec   | < 1.80 µSec   | < 1.80 µSec   | < 1.80 µSec  |
| Throughput (Mpps)                      | 7.44 Mpps   | 11.90 Mpps  | 11.90 Mpps  | 23.80 Mpps   |
| Capacity                               | 10 Gbps   | 16 Gbps   | 16 Gbps   | 32 Gbps  |
| MAC address table size                 | 8192 entries  | 8192 entries  | 8192 entries  | 8192 entries   |
| Reliability MTBF (years)               | 525.8   | 416.2   | 131.1   | 269.8  |
| <b>Environment</b>                     |   |   |   |  |
| Operating temperature                  | 32°F to 104°F (0°C to 40°C)   | 32°F to 104°F (0°C to 40°C)   | 32°F to 104°F (0°C to 40°C)   | 32°F to 104°F (0°C to 40°C)  |
| Operating relative humidity            | 15% to 95% @ 104°F (40°C) non-condensing  | 15% to 95% @ 104°F (40°C) non-condensing  | 15% to 95% @ 104°F (40°C) non-condensing  | 15% to 95% @ 104°F (40°C) non-condensing   |
| Nonoperating/storage temperature       | -40°F to 158°F (-40°C to 70°C) up to 15000 ft   | -40°F to 158°F (-40°C to 70°C) up to 15000 ft   | -40°F to 158°F (-40°C to 70°C) up to 15000 ft   | -40°F to 158°F (-40°C to 70°C) up to 15000 ft  |
| Nonoperating/storage relative humidity | 15% to 95% @ 149°F (65°C) non-condensing  | 15% to 95% @ 149°F (65°C) non-condensing  | 15% to 95% @ 149°F (65°C) non-condensing  | 15% to 95% @ 149°F (65°C) non-condensing   |
| Altitude                               | up to 10,000 ft (3 km)  | up to 10,000 ft (3 km)  | up to 10,000 ft (3 km)  | up to 10,000 ft (3 km)   |
| <b>Acoustics</b>                       |   |   |   |  |
|  | Fanless   | Fanless   | Fanless   | Fanless  |



## Technical specifications

|  | <b>HPE Networking Instant On Switch<br/>16p Gigabit CL4 PoE 124W 1430<br/>(R8R48A)</b>  | <b>HPE Networking Instant On Switch<br/>24p Gigabit 1430<br/>(R8R49A)</b>  | <b>HPE Networking Instant On Switch<br/>26p Gigabit 2p SFP 1430<br/>(R8R50A)</b>   |
|--|---|--|--|
| <b>I/O ports and slots</b>             |   |  |  |
|  | 16 RJ-45 autosensing 10/100/1000 Class 4 PoE ports<br>(IEEE 802.3 Type 10BASE-T, IEEE 802.3u Type 100BASE-TX, IEEE 802.3ab Type 1000BASE-T); Duplex: 10BASE-T/100BASE-TX: half or full; 1000BASE-T: full only | 24 RJ-45 autosensing 10/100/1000 ports (IEEE 802.3 Type 10BASE-T, IEEE 802.3u Type 100BASE-TX, IEEE 802.3ab Type 1000BASE-T); Duplex: 10BASE-T/100BASE-TX: half or full; 1000BASE-T: full only | 26 RJ-45 autosensing 10/100/1000 ports (IEEE 802.3 Type 10BASE-T, IEEE 802.3u Type 100BASE-TX, IEEE 802.3ab Type 1000BASE-T); Duplex: 10BASE-T/100BASE-TX: half or full; 1000BASE-T: full only<br>2 SFP 1GbE ports |
| <b>Physical characteristics</b>        |   |  |  |
| Dimensions (D x W x H)                 | 10.23 x 10.83 x 1.72 in<br>(26 x 27.5 x 4.4 cm)   | 8.86 x 13.38 x 1.72 in<br>(22.5 x 34 x 4.4 cm)   | 8.85 x 15.27 x 1.72 in<br>(22.5 x 38.8 x 4.4 cm)   |
| Weight                                 | 4.60 lb (2.09 kg)   | 4.20 lb (1.91 kg)  | 5.00 lb (2.27 kg)  |
| <b>Processor and memory</b>            |   |  |  |
|  | 128Kb EEPROM; Packet buffer size: 2.0 Mb  | 128Kb EEPROM; Packet buffer size: 2.0 Mb   | 32Mb Flash; Packet buffer size: 12.0 Mb  |
| <b>Performance</b>                     |   |  |  |
| 100 Mb latency                         | < 2.7 µSec  | < 2.7 µSec   | < 5.21 µSec  |
| 1000 Mb latency                        | < 1.80 µSec   | < 1.80 µSec  | > 2.90 µSec  |
| Throughput (Mpps)                      | 23.80 Mpps  | 35.71 Mpps   | 41.68 Mpps   |
| Capacity                               | 32 Gbps   | 48 Gbps  | 56 Gbps  |
| MAC address table size                 | 8192 entries  | 8192 entries   | 16384 entries  |
| Reliability MTBF (years)               | 126.1   | 199.5  | 171.9  |
| <b>Environment</b>                     |   |  |  |
| Operating temperature                  | 32°F to 104°F<br>(0°C to 40°C)  | 32°F to 104°F<br>(0°C to 40°C)   | 32°F to 104°F<br>(0°C to 40°C)   |
| Operating relative humidity            | 15% to 95% @ 104°F (40°C) non-condensing  | 15% to 95% @ 104°F (40°C) non-condensing   | 15% to 95% @ 104°F (40°C) non-condensing   |
| Nonoperating/Storage temperature       | -40°F to 158°F (-40°C to 70°C) up to 15000 ft   | -40°F to 158°F (-40°C to 70°C) up to 15000 ft  | -40°F to 158°F (-40°C to 70°C) up to 15000 ft  |
| Nonoperating/Storage relative humidity | 15% to 95% @ 149°F (65°C) non-condensing  | 15% to 95% @ 149°F (65°C) non-condensing   | 15% to 95% @ 149°F (65°C) non-condensing   |
| Altitude                               | up to 10,000 ft (3 km)  | up to 10,000 ft (3 km)   | up to 10,000 ft (3 km)   |
| <b>Acoustics</b>                       |   |  |  |
|  | Fanless   | Fanless  | Fanless  |



## Technical specifications

|                                   | <b>HPE Networking<br/>Instant On Switch 5p<br/>Gigabit 1430<br/>(R8R44A)</b> | <b>HPE Networking<br/>Instant On Switch 8p<br/>Gigabit 1430<br/>(R8R45A)</b> | <b>HPE Networking<br/>Instant On Switch 8p<br/>Gigabit CL4 PoE 64W<br/>1430<br/>(R8R46A)</b> | <b>HPE Networking<br/>Instant On Switch 16p<br/>Gigabit 1430<br/>(R8R47A)</b> |
|-----------------------------------|--|--|--|---|
| <b>Electrical characteristics</b> |  |  |  |   |
| Frequency                         | 50Hz/60Hz  | 50Hz/60Hz  | 50Hz/60Hz  | 50Hz/60Hz   |
| AC voltage                        | 100-240VAC   | 100-240VAC   | 100-240VAC   | 100-127VAC / 200-240VAC   |
| Current                           | 0.3A (12VDC - 1A)  | 0.3A (12VDC - 1A)  | 2A (54VDC - 1.58A)   | 0.2A/0.2A   |
| Maximum power rating              | 12W  | 12W  | 90W  | 7.9W  |
| Idle power                        | 1W   | 1.7W   | 4.1W   | 2.3W  |
| PoE power                         | —  | —  | 64W Class 4 PoE  | —   |
| Power supply                      | External Power Adapter   | External Power Adapter   | External Power Adapter   | Internal Power Supply   |
| <b>Safety</b>                     |  |  |  |   |
|                                   | EN/IEC 60950-1:2006 + A11:2009 + A1:2010 + A12:2011 + A2:2013                | EN/IEC 60950-1:2006 + A11:2009 + A1:2010 + A12:2011 + A2:2013                | EN/IEC 60950-1:2006 + A11:2009 + A1:2010 + A12:2011 + A2:2013                                | EN/IEC 60950-1:2006 + A11:2009 + A1:2010 + A12:2011 + A2:2013                 |
|                                   | EN/IEC 62368-1, 2nd. & 3rd. Ed.  | EN/IEC 62368-1, 2nd. & 3rd. Ed.  | EN/IEC 62368-1, 2nd. & 3rd. Ed.  | EN/IEC 62368-1, 2nd. & 3rd. Ed.   |
|                                   | UL 62368-1, 3rd. Ed.   | UL 62368-1, 3rd. Ed.   | UL 62368-1, 3rd. Ed.   | UL 62368-1, 3rd. Ed.  |
|                                   | CAN/CSA C22.2 No. 62368-1, 3rd. Ed.  | CAN/CSA C22.2 No. 62368-1, 3rd. Ed.  | CAN/CSA C22.2 No. 62368-1, 3rd. Ed.  | CAN/CSA C22.2 No. 62368-1, 3rd. Ed.   |
|                                   | EN/IEC 60825- 1:2018   | EN/IEC 60825- 1:2018   | EN/IEC 60825- 1:2018   | EN/IEC 60825- 1:2018  |
| <b>Emissions</b>                  |  |  |  |   |
|                                   | EN 55032:2015/CISPR 32, Class B  | EN 55032:2015/CISPR 32, Class B  | EN 55032:2015/CISPR 32, Class B  | EN 55032:2015/CISPR 32, Class A   |
|                                   | FCC CFR 47 Part 15: 2018, Class B  | FCC CFR 47 Part 15: 2018, Class B  | FCC CFR 47 Part 15: 2018, Class B  | FCC CFR 47 Part 15: 2018, Class A   |
|                                   | CES-003, Class B   | ICES-003, Class B  | ICES-003, Class B  | ICES-003, Class A   |
|                                   | VCCI-32, Class B   | VCCI-32, Class B   | VCCI-32, Class B   | VCCI-32, Class A  |
|                                   | CNS 13438, Class B   | CNS 13438, Class B   | CNS 13438, Class B   | CNS 13438, Class A  |
|                                   | KS C 9832, Class B   | KS C 9832, Class B   | KS C 9832, Class B   | KS C 9832, Class A  |
|                                   | AS/NZS CISPR 32, Class B   | AS/NZS CISPR 32, Class B   | AS/NZS CISPR 32, Class B   | AS/NZS CISPR 32, Class A  |



## Technical specifications

|                                   | <b>HPE Networking Instant On Switch<br/>16p Gigabit CL4 PoE 124W 1430<br/>(R8R48A)</b>  | <b>HPE Networking Instant On Switch<br/>24p Gigabit 1430<br/>(R8R49A)</b>   | <b>HPE Networking Instant On Switch<br/>26p Gigabit 2p SFP 1430<br/>(R8R50A)</b>  |
|-----------------------------------|---|---|---|
| <b>Electrical characteristics</b> |   |   |   |
| Frequency                         | 50Hz/60Hz   | 50Hz/60Hz   | 50Hz/60Hz   |
| AC voltage                        | 100-127VAC / 200-240VAC   | 100-127VAC / 200-240VAC   | 100-127VAC / 200-240VAC   |
| Current                           | 1.7A / 0.8A   | 0.3A / 0.2A   | 0.4A / 0.3A   |
| Maximum power rating              | 147W  | 11.7W   | 16.4W   |
| Idle power                        | 5W  | 3.2W  | 8W  |
| PoE power                         | 124W Class 4 PoE  | —   | —   |
| Power supply                      | Internal Power Supply   | Internal Power Supply   | Internal Power Supply   |
| <b>Safety</b>                     |   |   |   |
|                                   | EN/IEC 60950-1:2006 + A11:2009 +<br>A1:2010 +<br>A12:2011 + A2:2013<br>EN/IEC 62368-1, 2nd. & 3rd. Ed.<br>UL 62368-1, 3rd. Ed.<br>CAN/CSA C22.2 No. 62368-1, 3rd. Ed.<br>EN/IEC 60825- 1:2018 | EN/IEC 60950-1:2006 + A11:2009 +<br>A1:2010 +<br>A12:2011 + A2:2013<br>EN/IEC 62368-1, 2nd. & 3rd. Ed.<br>UL 62368-1, 3rd. Ed.<br>CAN/CSA C22.2 No. 62368-1, 3rd. Ed.<br>EN/IEC 60825- 1:2018 | EN/IEC 60950-1:2006 + A11:2009 +<br>A1:2010 +<br>A12:2011 + A2:2013<br>EN/IEC 62368-1, 2nd. & 3rd. Ed.<br>UL 62368-1, 3rd. Ed.<br>CAN/CSA C22.2 No. 62368-1, 3rd. Ed.<br>EN/IEC 60825- 1:2018 |
| <b>Emissions</b>                  |   |   |   |
|                                   | EN 55032:2015/CISPR 32, Class A<br>FCC CFR 47 Part 15: 2018, Class A<br>ICES-003, Class A<br>VCCI-32, Class A<br>CNS 13438, Class A<br>KS C 9832, Class A<br>AS/NZS CISPR 32, Class A         | EN 55032:2015/CISPR 32, Class A<br>FCC CFR 47 Part 15: 2018, Class A<br>ICES-003, Class A<br>VCCI-32, Class A<br>CNS 13438, Class A<br>KS C 9832, Class A<br>AS/NZS CISPR 32, Class A         | EN 55032:2015/CISPR 32, Class A<br>FCC CFR 47 Part 15: 2018, Class A<br>ICES-003, Class A<br>VCCI-32, Class A<br>CNS 13438, Class A<br>KS C 9832, Class A<br>AS/NZS CISPR 32, Class A         |



## Technical specifications

|  | <b>HPE Networking<br/>Instant On Switch 5p<br/>Gigabit 1430<br/>(R8R44A)</b>   | <b>HPE Networking<br/>Instant On Switch 8p<br/>Gigabit 1430<br/>(R8R45A)</b>   | <b>HPE Networking<br/>Instant On Switch 8p<br/>Gigabit CL4 PoE 64W<br/>1430<br/>(R8R46A)</b>   | <b>HPE Networking<br/>Instant On Switch 16p<br/>Gigabit 1430<br/>(R8R47A)</b>  |
|--|--|--|--|--|
| <b>Immunity</b>                          |  |  |  |  |
| Generic                                  | BS/EN 55035, CISPR 35, KS C 9835   | BS/EN 55035, CISPR 35, KS C 9835   | BS/EN 55035, CISPR 35, KS C 9835   | BS/EN 55035, CISPR 35, KS C 9835   |
| EN                                       | EN 55035, CISPR 35   | EN 55035, CISPR 35   | EN 55035, CISPR 35   | EN 55035, CISPR 35   |
| ESD                                      | EN/IEC 61000-4-2   | EN/IEC 61000-4-2   | EN/IEC 61000-4-2   | EN/IEC 61000-4-2   |
| Radiated                                 | EN/IEC 61000-4-3   | EN/IEC 61000-4-3   | EN/IEC 61000-4-3   | EN/IEC 61000-4-3   |
| EFT/Burst                                | EN/IEC 61000-4-4   | EN/IEC 61000-4-4   | EN/IEC 61000-4-4   | EN/IEC 61000-4-4   |
| Surge                                    | EN/IEC 61000-4-5   | EN/IEC 61000-4-5   | EN/IEC 61000-4-5   | EN/IEC 61000-4-5   |
| Conducted                                | EN/IEC 61000-4-6   | EN/IEC 61000-4-6   | EN/IEC 61000-4-6   | EN/IEC 61000-4-6   |
| Power frequency magnetic field           | EN/IEC 61000-4-8   | EN/IEC 61000-4-8   | EN/IEC 61000-4-8   | EN/IEC 61000-4-8   |
| Voltage dips and interruptions           | EN/IEC 61000-4-11  | EN/IEC 61000-4-11  | EN/IEC 61000-4-11  | EN/IEC 61000-4-11  |
| Harmonics                                | EN/IEC 61000-3-2   | EN/IEC 61000-3-2   | EN/IEC 61000-3-2   | EN/IEC 61000-3-2   |
| Flicker                                  | EN /IEC 61000-3-3  | EN /IEC 61000-3-3  | EN /IEC 61000-3-3  | EN /IEC 61000-3-3  |
| <b>Device management</b>                 |  |  |  |  |
|  | Unmanaged  | Unmanaged  | Unmanaged  | Unmanaged  |
| <b>Mounting</b>                          |  |  |  |  |
| Mounting positions and supported racking | Supports table-top mounting<br>Supports wall-mounting with ports facing either up or down using base surface mounting holes<br>Supports under-table mounting using base surface mounting holes | Supports table-top mounting<br>Supports wall-mounting with ports facing either up or down using base surface mounting holes<br>Supports under-table mounting using base surface mounting holes | Mounts in an EIA standard 19 in telco rack or equipment cabinet. 2-post rack kit included<br>Supports table-top mounting<br>Supports rack-mounting using the brackets provided<br>Supports wall-mounting with ports facing either up or down using either the base surface mounting holes, or the brackets provided<br>Supports under-table mounting using the brackets provided<br>Must be mounted top surface up. To prevent possible impact to long-term reliability, product should not be mounted upside-down | Mounts in an EIA standard 19 in telco rack or equipment cabinet. 2-post rack kit included<br>Supports table-top mounting<br>Supports rack-mounting using the brackets provided<br>Supports wall-mounting with ports facing either up or down using either the base surface mounting holes, or the brackets provided<br>Supports under-table mounting using the brackets provided<br>Must be mounted top surface up. To prevent possible impact to long-term reliability, product should not be mounted upside-down |
| <b>Transceivers</b>                      |  |  |  |  |
|  | —  | —  | —  | —  |



## Technical specifications

|                                | <b>HPE Networking Instant On Switch<br/>16p Gigabit CL4 PoE 124W 1430<br/>(R8R48A)</b>  | <b>HPE Networking Instant On Switch<br/>24p Gigabit 1430<br/>(R8R49A)</b>   | <b>HPE Networking Instant On Switch<br/>26p Gigabit 2p SFP 1430<br/>(R8R50A)</b>   |
|--------------------------------|---|---|--|
| <b>Immunity</b>                |   |   |  |
| Generic                        | BS/EN 55035, CISPR 35, KS C 9835  | BS/EN 55035, CISPR 35, KS C 9835  | BS/EN 55035, CISPR 35, KS C 9835   |
| EN                             | EN 55035, CISPR 35  | EN 55035, CISPR 35  | EN 55035, CISPR 35   |
| ESD                            | EN/IEC 61000-4-2  | EN/IEC 61000-4-2  | EN/IEC 61000-4-2   |
| Radiated                       | EN/IEC 61000-4-3  | EN/IEC 61000-4-3  | EN/IEC 61000-4-3   |
| EFT/Burst                      | EN/IEC 61000-4-4  | EN/IEC 61000-4-4  | EN/IEC 61000-4-4   |
| Surge                          | EN/IEC 61000-4-5  | EN/IEC 61000-4-5  | EN/IEC 61000-4-5   |
| Conducted                      | EN/IEC 61000-4-6  | EN/IEC 61000-4-6  | EN/IEC 61000-4-6   |
| Power frequency magnetic field | EN/IEC 61000-4-8  | EN/IEC 61000-4-8  | EN/IEC 61000-4-8   |
| Voltage dips and interruptions | EN/IEC 61000-4-11   | EN/IEC 61000-4-11   | EN/IEC 61000-4-11  |
| Harmonics                      | EN/IEC 61000-3-2  | EN/IEC 61000-3-2  | EN/IEC 61000-3-2   |
| Flicker                        | EN /IEC 61000-3-3   | EN /IEC 61000-3-3   | EN /IEC 61000-3-3  |
| <b>Device management</b>       |   |   |  |
|                                | Unmanaged   | Unmanaged   | Unmanaged  |
| <b>Mounting</b>                |   |   |  |
|                                | Mounts in an EIA standard 19 in telco rack or equipment cabinet. 2-post rack kit included   | Mounts in an EIA standard 19 in telco rack or equipment cabinet. 2-post rack kit included   | Mounts in an EIA standard 19 in telco rack or equipment cabinet. 2-post rack kit included  |
|                                | Supports table-top mounting   | Supports table-top mounting   | Supports table-top mounting  |
|                                | Supports rack-mounting using the brackets provided  | Supports rack-mounting using the brackets provided  | Supports rack-mounting using the brackets provided   |
|                                | Supports wall-mounting with ports facing either up or down using either the base surface mounting holes, or the brackets provided | Supports wall-mounting with ports facing either up or down using either the base surface mounting holes, or the brackets provided | Supports wall-mounting with ports facing either up or down using either the base surface mounting holes, or the brackets provided                |
|                                | Supports under-table mounting using the brackets provided   | Supports under-table mounting using the brackets provided   | Supports under-table mounting using the brackets provided  |
|                                | Must be mounted top surface up. To prevent possible impact to long-term reliability, product should not be mounted upside-down    | Must be mounted top surface up. To prevent possible impact to long-term reliability, product should not be mounted upside-down    | Must be mounted top surface up. To prevent possible impact to long-term reliability, product should not be mounted upside-down                   |
| <b>Transceivers</b>            |   |   |  |
|                                | —   | —   | HPE Networking Instant On 1G SFP LC LX 10km SMF Transceiver (S0G20A)<br>HPE Networking Instant On 1G SFP LC SX 500m OM2 MMF Transceiver (R9D16A) |





## Standards and protocols

(Applies to all product in series)

### General Protocols

|              |                             |
|--------------|-----------------------------|
| IEEE 802.3i  | 10 Mbps Ethernet            |
| IEEE 802.3u  | 100Base-T Ethernet          |
| IEEE 802.3z  | 1000 Mbps Ethernet          |
| IEEE 802.3ab | 1000Base-T                  |
| IEEE 802.3af | PoE1 (PoE models only)      |
| IEEE 802.3at | PoE1 (PoE models only)      |
| IEEE 802.3x  | Flow Control                |
| IEEE 802.3az | Energy Efficient Ethernet   |
| RFC 2474     | QoS diffserv (DSCP) mapping |



## Ordering information

### HPE Networking Instant On Switch Series 1430

| Part number | Description  | Ports | Uplink Ports | Class 4 PoE Power Budget |
|-------------|--|-------|--------------|--------------------------|
| R8R44A      | HPE Networking Instant On Switch 5p Gigabit 1430               | 5     | –            | –                        |
| R8R45A      | HPE Networking Instant On Switch 8p Gigabit 1430               | 8     | –            | –                        |
| R8R46A      | HPE Networking Instant On Switch 8p Gigabit CL4 PoE 64W 1430   | 8     | –            | 64W                      |
| R8R47A      | HPE Networking Instant On Switch 16p Gigabit 1430              | 16    | –            | –                        |
| R8R48A      | HPE Networking Instant On Switch 16p Gigabit CL4 PoE 124W 1430 | 16    | –            | 124W                     |
| R8R49A      | HPE Networking Instant On Switch 24p Gigabit 1430              | 24    | –            | –                        |
| R8R50A      | HPE Networking Instant On Switch 26p Gigabit 2p SFP 1430       | 26    | 2 SFP        | –                        |

### 3 and 5 year support options

| Product SKU | Support SKU | Support SKU Description  |
|-------------|-------------|--|
| R8R44A      | H36PQE      | HPE Aruba Networking Foundational Care 3Y NBD Exch IOn 1430 5G Switch SVC                  |
| R8R44A      | H36PRE      | HPE Aruba Networking Foundational Care 5Y NBD Exch IOn 1430 5G Switch SVC                  |
| R8R45A      | H36PSE      | HPE Aruba Networking Foundational Care 3Y NBD Exch IOn 1430 8G Switch SVC                  |
| R8R45A      | H36PTE      | HPE Aruba Networking Foundational Care 5Y NBD Exch IOn 1430 8G Switch SVC                  |
| R8R46A      | H36PVE      | HPE Aruba Networking Foundational Care 3Y NBD Exch IOn 1430 8G Class4 PoE 64W Switch SVC   |
| R8R46A      | H36PWE      | HPE Aruba Networking Foundational Care 5Y NBD Exch IOn 1430 8G Class4 PoE 64W Switch SVC   |
| R8R47A      | H36PXE      | HPE Aruba Networking Foundational Care 3Y NBD Exch IOn 1430 16G Switch SVC                 |
| R8R47A      | H36PYE      | HPE Aruba Networking Foundational Care 5Y NBD Exch IOn 1430 16G Switch SVC                 |
| R8R48A      | H36PZE      | HPE Aruba Networking Foundational Care 3Y NBD Exch IOn 1430 16G Class4 PoE 124W Switch SVC |
| R8R48A      | H36QBE      | HPE Aruba Networking Foundational Care 5Y NBD Exch IOn 1430 16G Class4 PoE 124W Switch SVC |
| R8R49A      | H36QCE      | HPE Aruba Networking Foundational Care 3Y NBD Exch IOn 1430 24G Switch SVC                 |
| R8R49A      | H36QDE      | HPE Aruba Networking Foundational Care 5Y NBD Exch IOn 1430 24G Switch SVC                 |
| R8R50A      | H36QFE      | HPE Aruba Networking Foundational Care 3Y NBD Exch IOn 1430 26G 2SFP Switch SVC            |
| R8R50A      | H36QGE      | HPE Aruba Networking Foundational Care 5Y NBD Exch IOn 1430 26G 2SFP Switch SVC            |

(Go to [Support Services Central](#) to locate Foundation Care SKUs for switches.)



© Copyright 2024 Hewlett Packard Enterprise Development LP. The information contained herein is subject to change without notice. The only warranties for Hewlett Packard Enterprise products and services are set forth in the express warranty statements accompanying such products and services. Nothing herein should be construed as constituting an additional warranty. Hewlett Packard Enterprise shall not be liable for technical or editorial errors or omissions contained herein.

All third-party marks are property of their respective owners.

DS\_hpe-nio\_SwitchSeries-1430\_EM\_100324 a00123902enw